



June 22, 2011

As the primary resource responsible for managing your organization’s IT environment, have you been wondering:

- Is my IT budget appropriate for a business my size?
- Do I have too many people in IT? Not enough? What skill set is right?
- How do other contractors provide high-performance remote access?
- Am I outsourcing the right IT function?
- Is my back-up and fail-over plan sufficient?

Or are these questions being asked of you?

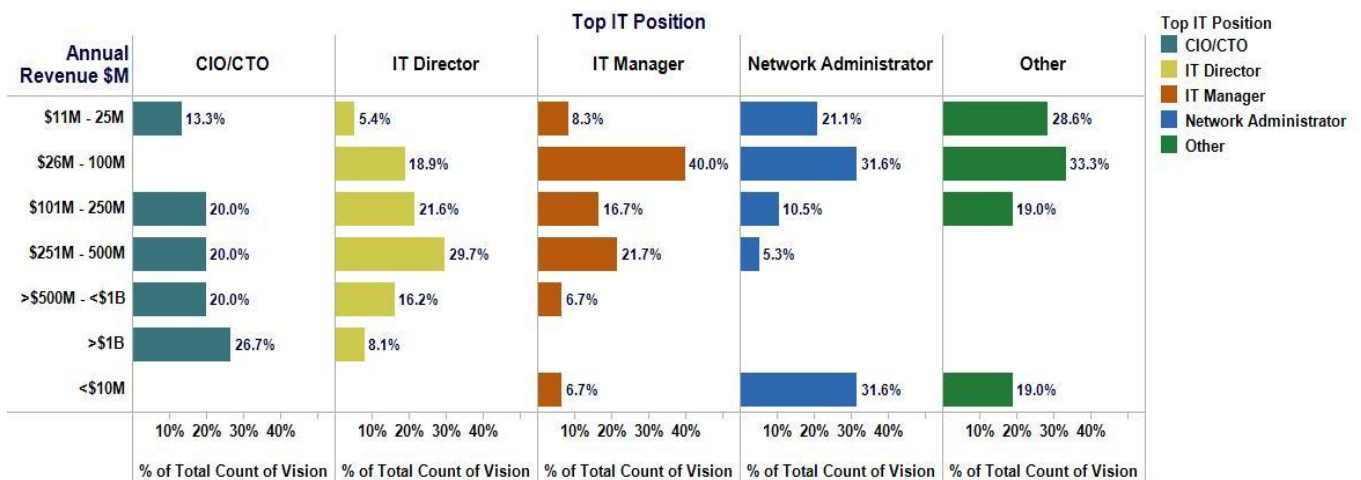
These and similar queries are regularly being posed by contractors concerned over how well their IT department and systems are established and performing. Burger Consulting Group (BCG) is working to provide you with answers to these and many other important IT-related questions through the IT Performance Metrics Survey and Database.

Focus on Key Metrics

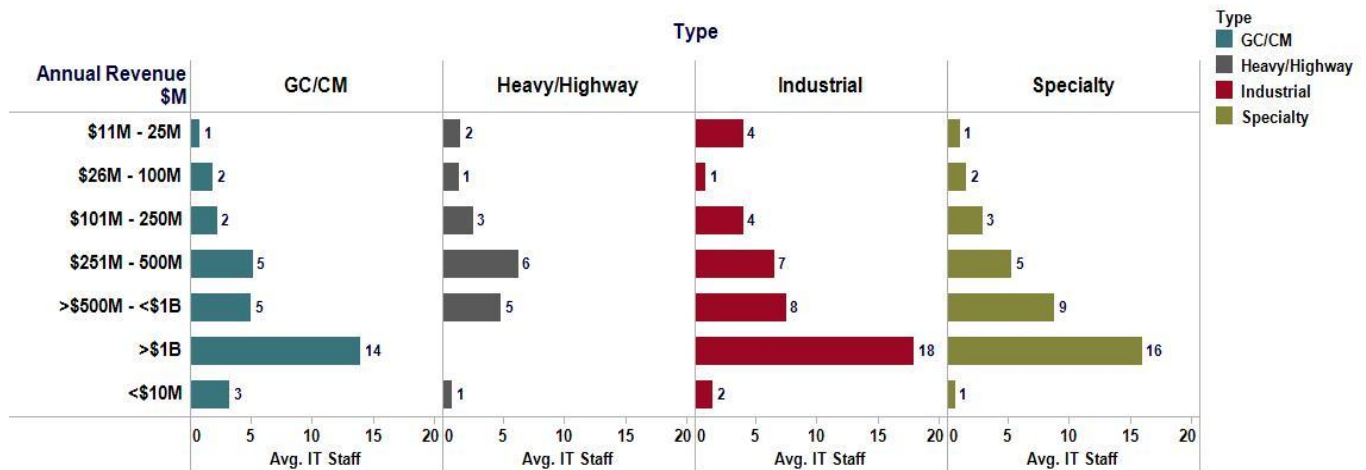
So how is our approach unique from any other survey? Well, rather than request hundreds of data points, many of which have marginal value, BCG is focusing on only the most important metrics. So key indicators like staffing, budgeting, adoption, training, and outsourcing are requested and then reported back to you against averages and best-in-class values.

The following three graphs present examples of some of the key metrics that will be evaluated and presented from this survey:

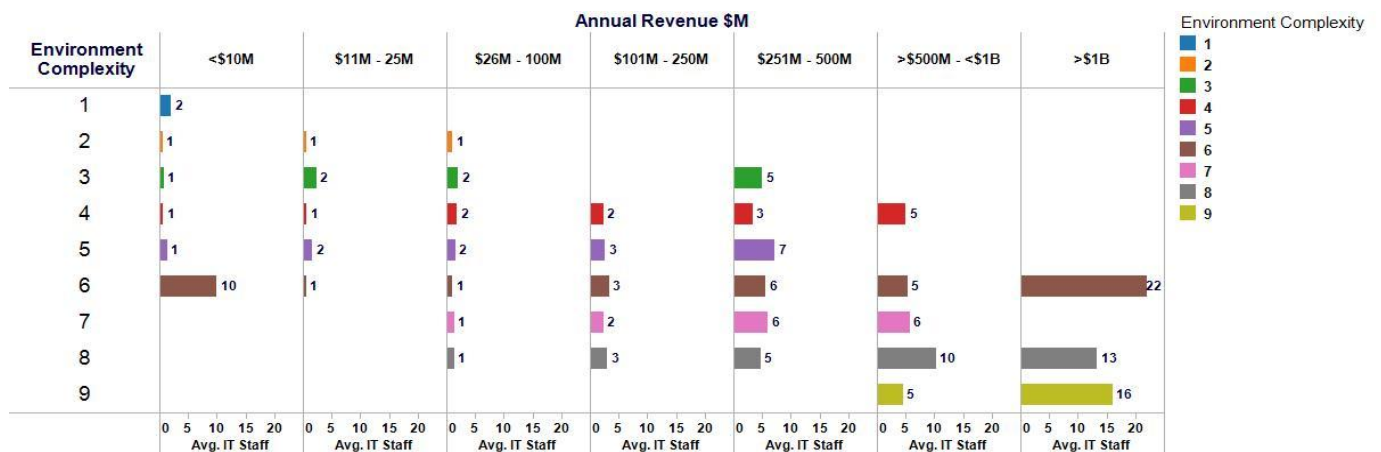
Highest IT Position By Company Size



Number of IT Staff By Revenue and By Company Type



Number of IT Staff By Revenue and By the Complexity of the IT Environment



Dissemination of Survey Results

We plan to present the results from the first round of this survey at the AGC IT Forum Conference, August 11 and 12, in Chicago. BCG will also make available a white paper with the results from the survey. Those who responded to the survey will receive the same white paper with results and graphical analysis at no charge.

There is no charge to you, as BCG is underwriting the survey cost for this inaugural version. Your responses and company identity will be completely confidential.

Getting Started

For only a small fraction of your time and much insight to gain, BCG encourages you to participate. Please click on the following link to get started on this valuable survey, <https://survey.burgerconsulting.com/se.ashx?s=5118BE89090DF3EE>. The following year's survey will be more comprehensive AND will remember your responses to this year's version.

Thank you in advance for your participation.

Best regards,



Christian Burger

President

Burger Consulting Group